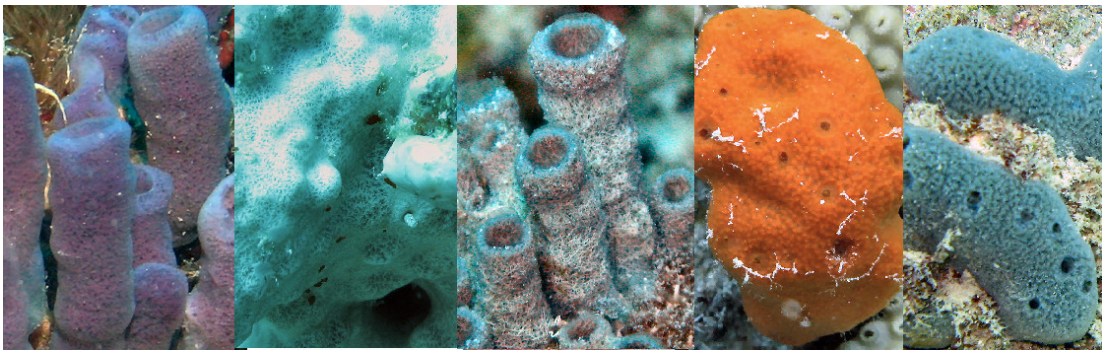


SURFACE

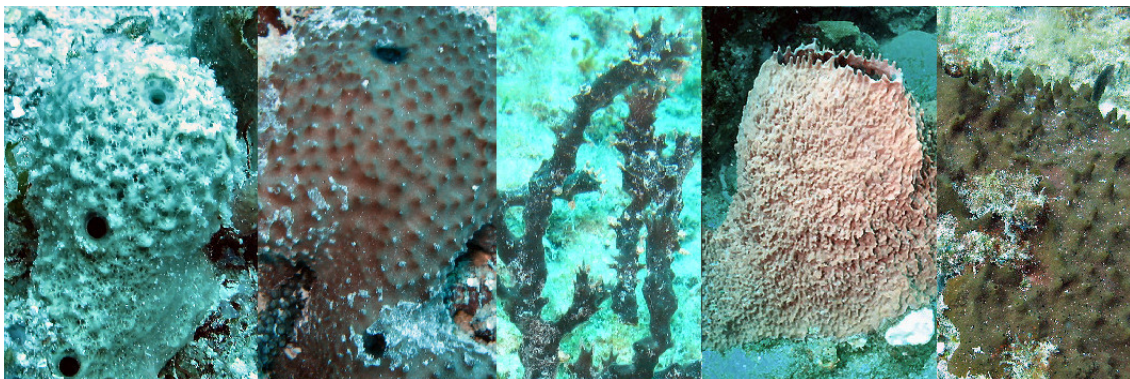
1. Smooth, non-porous. Visually continuous and with no obvious three-dimensional structures.



2. Smooth, porous. Fine to coarse pores, mesh, webbing or reticulation visible, but with no obvious three-dimensional surface structures.



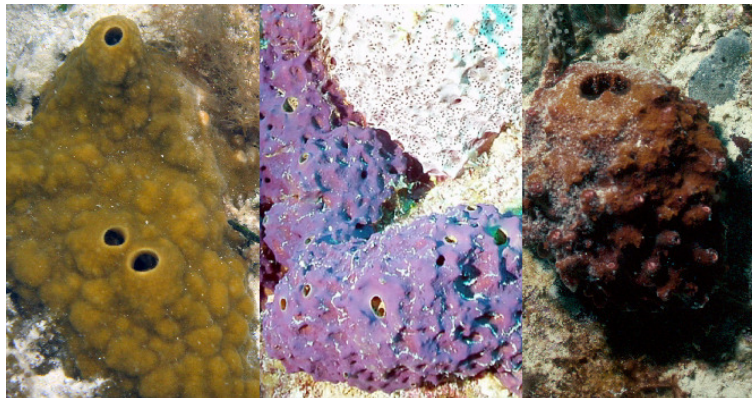
3. Spiny or with pointed or rounded conical projections (conulose). May be low and rounded to tall and narrow, crowded or scattered; sometimes not covering entire surface.



4. Papillose, warty. Low, small, broadly rounded projections; may be soft or firm.



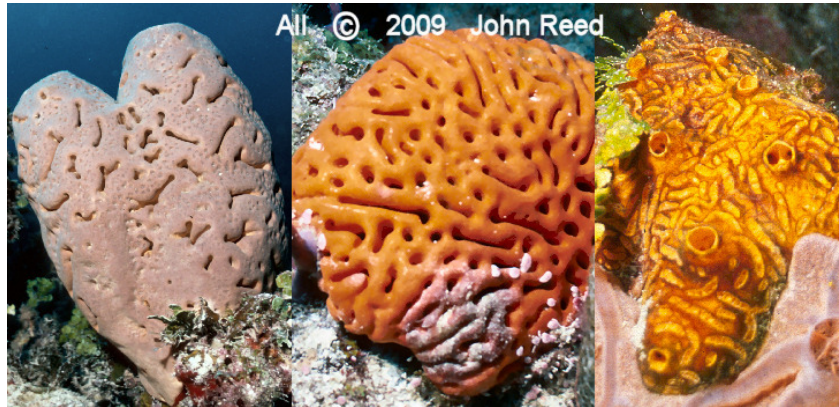
5. Lumpy. Large irregular rounded projections, may be smoothly rounded or rough.



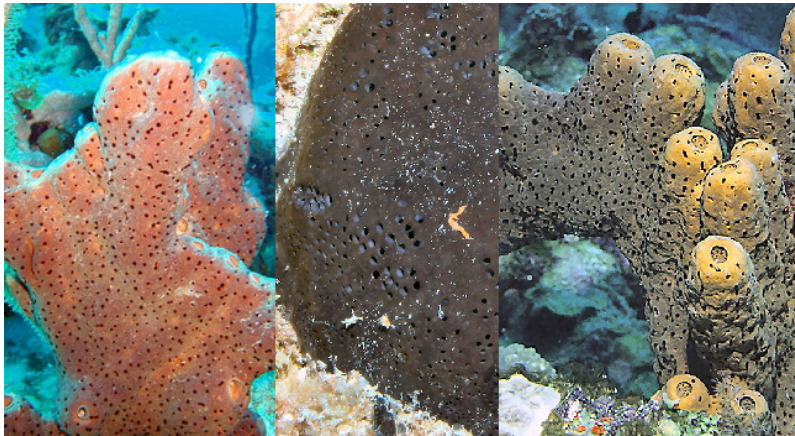
6. Ridged, ribbed, corrugated, rugose. Elongated or irregular raised surface structures. Ridges may be regular and apparently surround roughly uniform shallow depressions. Individual raised projections are not conical or rounded.



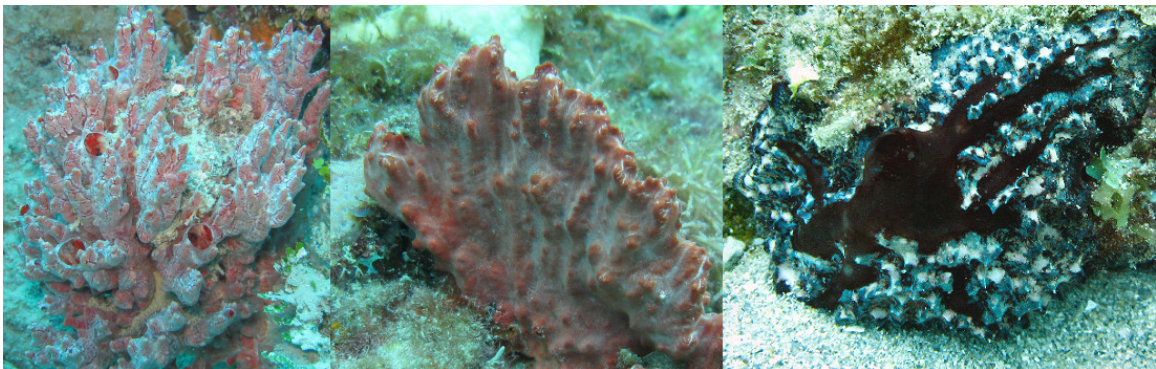
7. Grooved. Distinct narrow channels in a rough or smooth surface. May be accompanied by holes or pockmarks. Channels may function as inhalant or exhalant openings in some species.



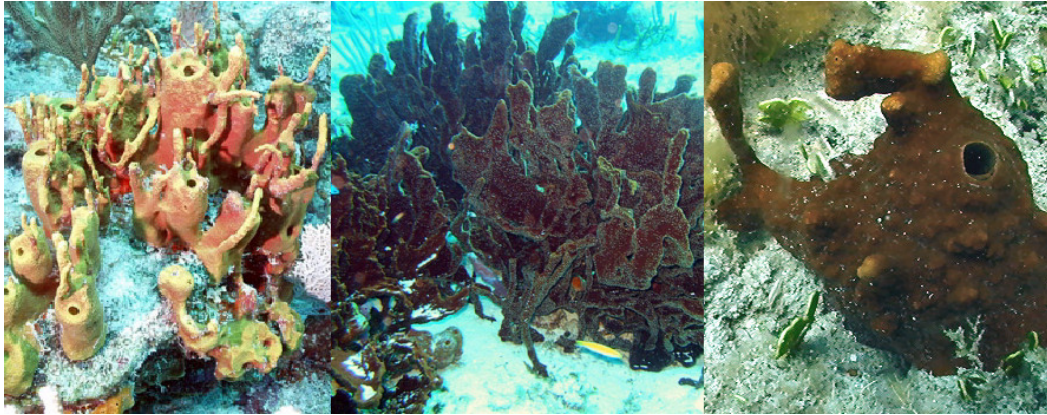
8. Pockmarked, holey. Scattered or clustered holes chiefly other than main oscules. If grooves are present, they are few.



9. Transparent membrane. Membrane may cover spines.



10. With fingerlike or branching outgrowths from main body.



11. With distinct canal systems converging on oscules.

