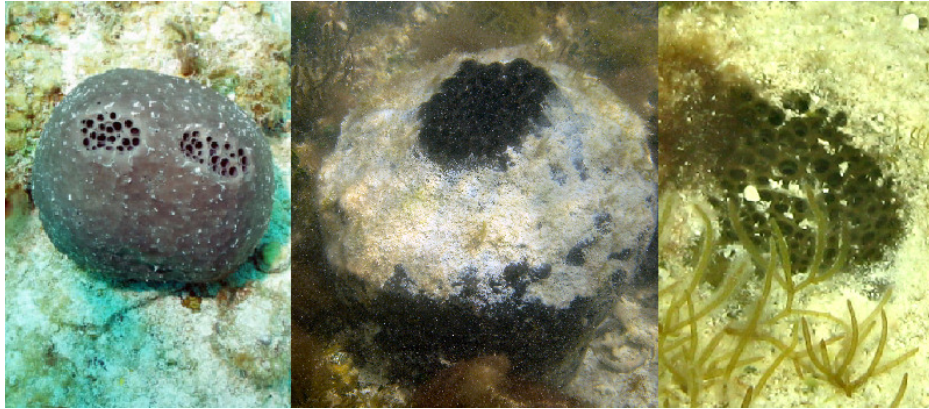


OSCLE DISTRIBUTION

1. Cluster(s)



2. Row(s). At least the majority in rows; some may be scattered.



3. Irregularly scattered.



4. On one side of body of erect rod-like, columnar, or similar sponges. Not including massive, hemispheric, flattened or encrusting forms with oscules on upper surface only.



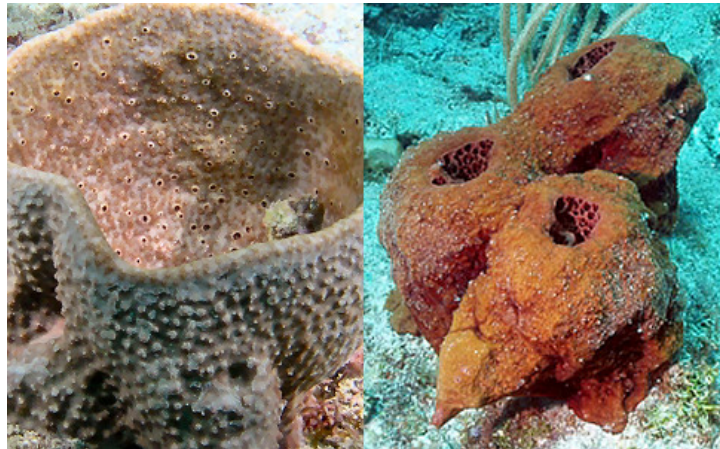
5. On top of tube(s) or lobes.



6 Regularly distributed.



7. Within cup or vase.



8. Not apparent.

