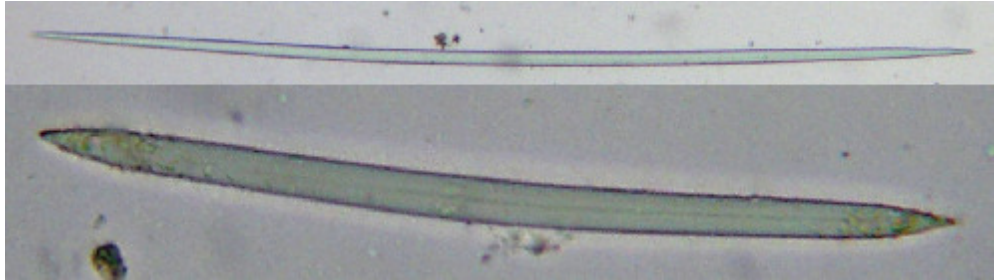
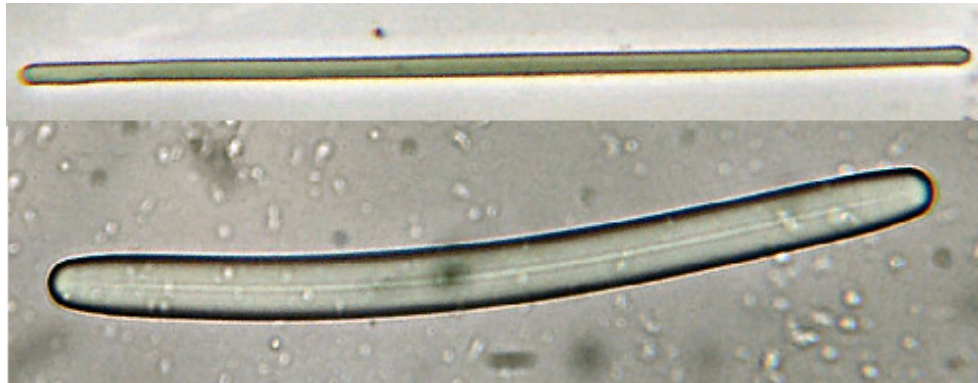


## Large Glassy Skeletal Elements (Megascleres) >100μm

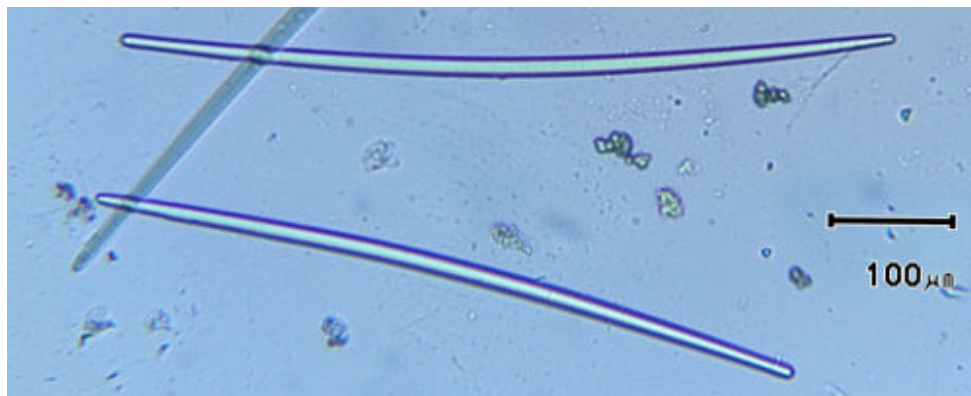
- 1 Rod with 2 pointed ends (oxea)



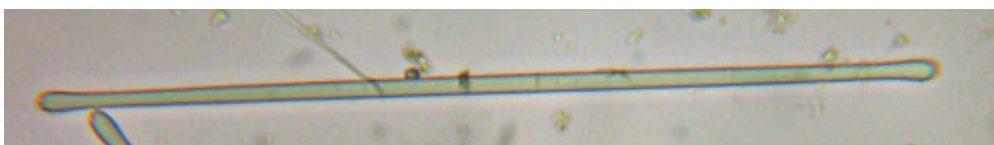
- 2 Rod with 2 blunt round ends (strongyle)



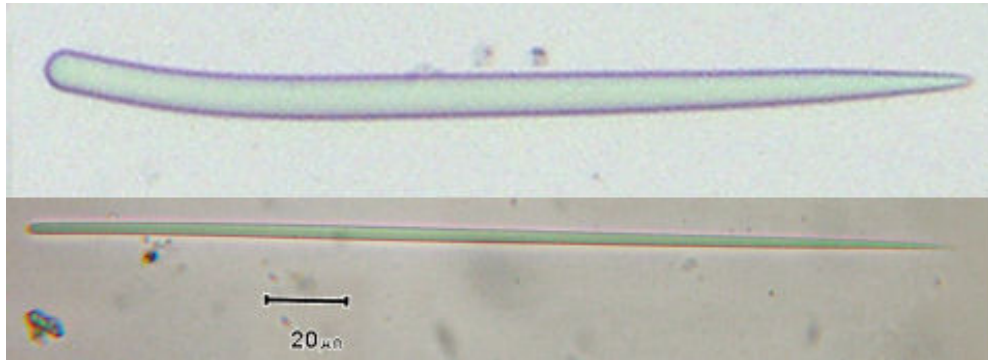
- 3 Rod with 2 distinctly tapering rounded ends (strongyloxea)



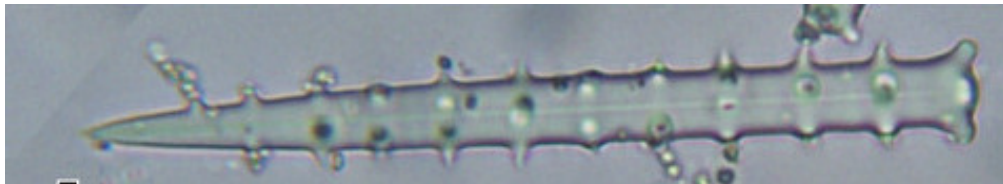
- 4 Rod with both ends swollen (tylote)



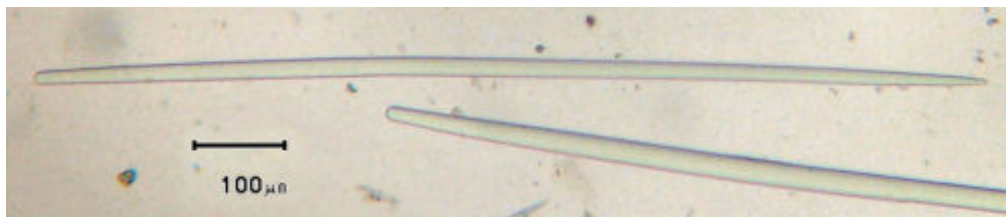
- 5 Rod with 1 pointed end and 1 blunt or rounded end (style)



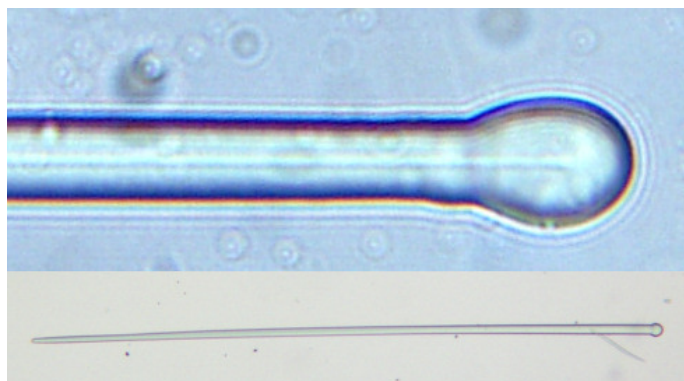
- 6 Spiny rod with 1 pointed end and 1 blunt or rounded end (acanthostyle)



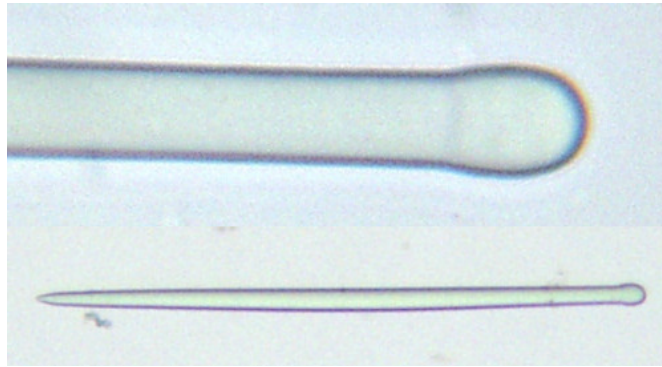
- 7 Rod with 1 pointed end and 1 gently tapering rounded end (styloid)



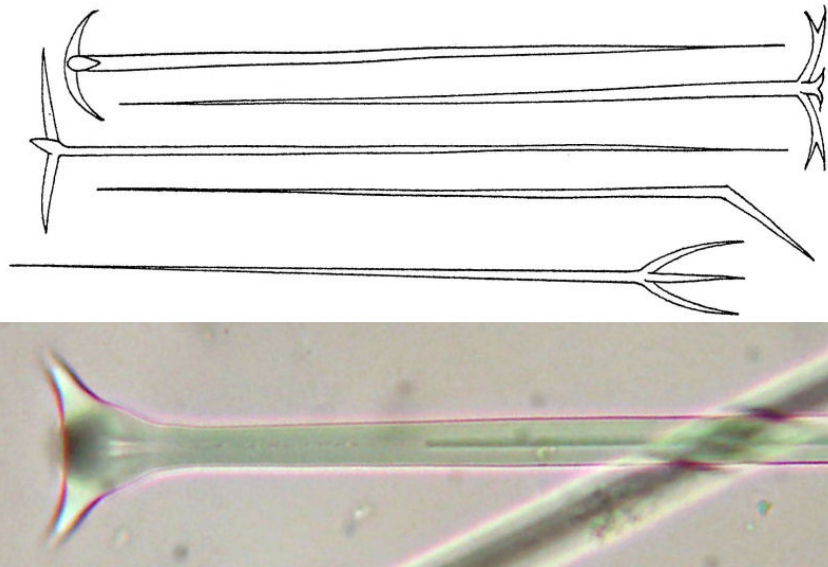
- 8 Rod with 1 pointed end and 1 round swollen end (tylostyle)



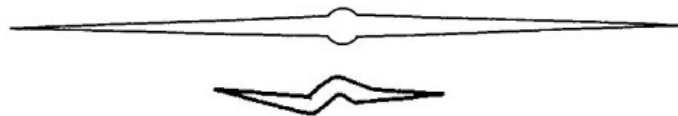
- 9 Rod with 1 pointed end and 1 round slightly swollen end (subtylostyle)



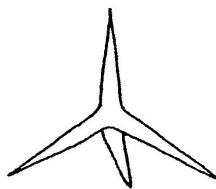
- 10 Very long rods with 1 pointed end; 2-4 short rays at other end (triaene)



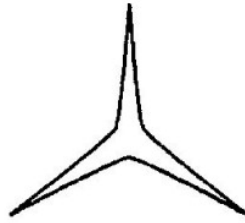
- 11 Small rod with central swelling (centrotylote oxea or diods)



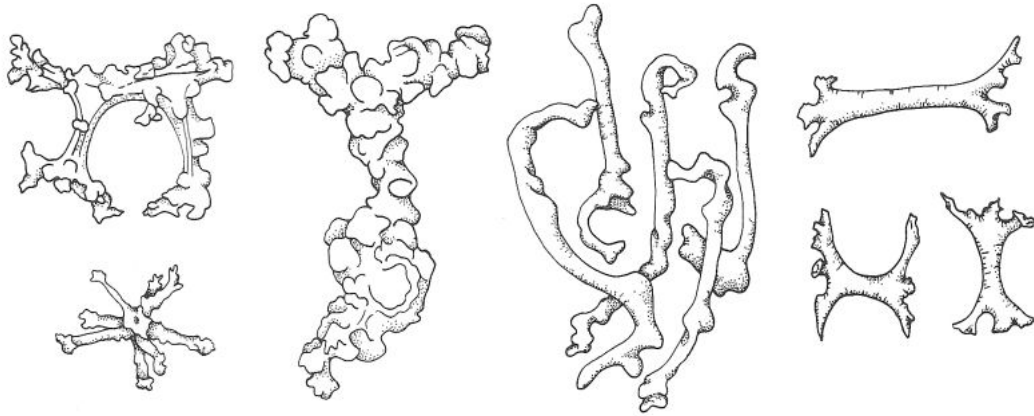
- 12 Spicule with 4 equal rays (calthrop)



- 13 Spicule with 3 equal rays (triod)



- 14 Interlocked irregularly branching (desma)



- 15 None